

 ILLUSTRATED GUIDE TO

Columbus

1899.

COMPLIMENTS OF
THE COLUMBUS STREET
RAILWAY COMPANY — —

Columbus

THE CONVENTION CITY OF THE STATE

POPULATION 140,000

Located in the Center of Ohio, and Having Direct
Railroad Connection with Every County in
the State, and with Every Part of
the United States.

Points About Columbus

Board of Trade with membership of nearly 1000.

Port of Entry, established in 1889.

Eighteen banks in all, seven of which are national banks.

Twenty-four benevolent and charitable institutions, including seven hospitals, and in addition several private sanitariums and hospitals.

Twenty-one building and loan associations.

One hundred and eight churches, exclusive of missions.

Seven libraries, containing 160,000 volumes.

Sixty-three newspaper and periodical publications.

Area of city in square miles, 16.25.

Area of city in acres, 10,400.

Area of parks owned by the city, 215 acres.
Other parks 100 acres.

Improved streets, 103.43 miles, costing \$4,904,-289.73.

Public sewers, 150 miles.

Total daily pumping capacity of water works
53,000,000 gallons.

Workhouse established 1896.

Total length of street railways, 88 miles.

Total number of trains entering and leaving the city daily, 126.

Appraised value of real estate, \$49,613,000.
Personal property, \$13,037,000.

Thirty-three educational institutions, exclusive of public schools.

Two excellent medical colleges.

Agencies for seven different express companies.

Three telegraph companies.

Abundant natural gas supply.

It is the gateway of the Hocking Valley and Southern Ohio Coal Fields, having an output of ten million tons—COAL IS CHEAP.

Principal Halls and Theatres, with Seating Capacities

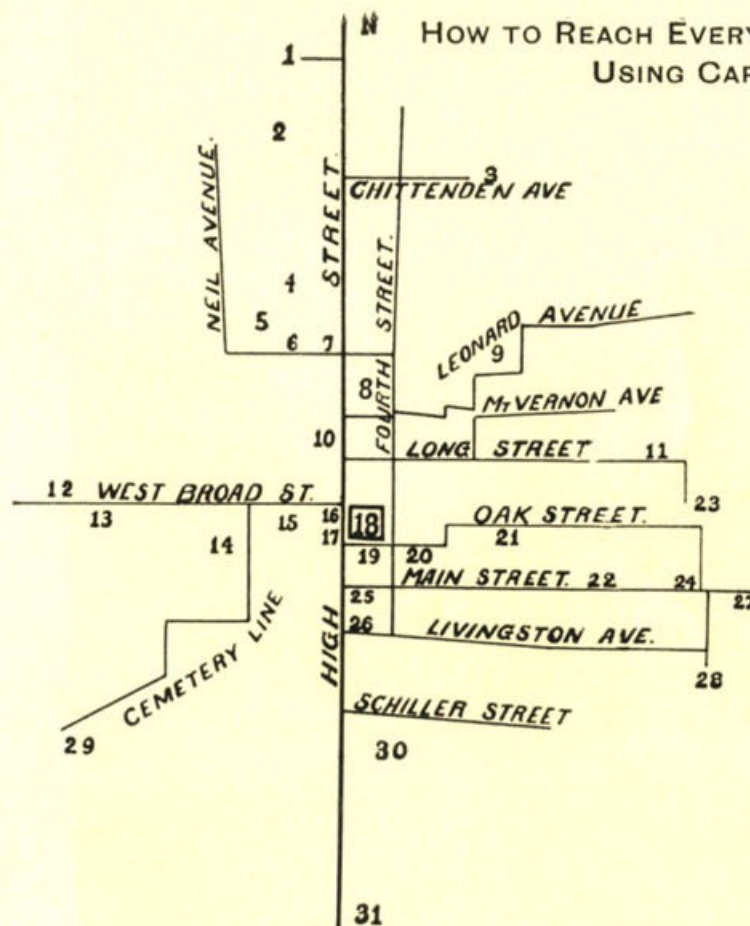
Columbus Auditorium	8000
City Hall	4000
O. S. U. Gymnasium	4000
Board of Trade	2000
Wirthwein's Hall	2000
Great Southern Hall	1000
Chittenden Auditorium	1000
G. A. R. Hall	1000
Great Southern Theatre	1700
Grand Opera House	1500
High Street Theatre	1700

Principal Hotels and their Capacities

Great Southern	1000
Chittenden	800
The Neil	400
Goodale Hotel	250
Park Hotel	250
Smith's European	100



COLUMBUS AUDITORIUM



HOW TO REACH EVERY IMPORTANT POINT IN THE CITY BY STREET CARS, USING CAPITOL SQUARE AS THE CENTRAL POINT

- 6 Auditorium..... } North Fourth, High Street or Neil
- 7 Park Hotel..... } Avenue cars, north
- 8 Union Station..... Cars all lines marked "Union Station"
- 9 United States Barracks.... Leonard Ave. cars, east
- 10 Chittenden Hotel..... Cars all lines marked "Union Station"
- 11 Saint Anthony Hospital... Long Street cars, east
- 12 State Hospital for Insane.. Broad Street cars, west, marked
- 13 Institution for Feeble- "Camp Chase"
- Minded Broad Street cars, west
- 14 Hawk's Hospital..... " " " "
- 15 Toledo & Ohio Central....
- Depot..... West Broad and Cemetery cars, west
- 16 Neil House... ..
- 17 The Goodale Hotel... .. } High, Schiller, Main, Neil, Oak,
- 18 State House and Capitol.. } Livingston and North Fourth St.
- Square..... } cars pass these.
- 19 P. O. and Custom House.. Oak and State Street cars, east
- 20 Starling Medical College and St. Francis Hospital, " " " "
- 21 Institution for Deaf and.. " " " "
- Dumb..... " " " "
- 22 Institution for Blind..... Main Street cars, east
- 23 Franklin Park..... Long Street or Oak Street cars, east
- 24 St. Vincent Hospital Main Street cars, east
- 25 Great Southern Hotel and Opera House..... High Street, High and Schiller, Main Street, Livingston Avenue, or Long Street cars, south
- 26 Court House High Street, High and Schiller, Main Street, Livingston Avenue, or Long Street cars, south
- 27 Capital University Main Street cars, east
- 28 Columbus Driving Park ... Livingston Avenue cars, east; also Main Street cars, east, for Races
- 29 Cemeteries..... Broad Street cars, west, marked "Cemeteries"
- 30 City Park..... High Street cars, south
- 31 Steel Plant..... " " " "

DIRECTIONS

- | To | Take |
|-----------------------------|---|
| 1 Olentangy Park..... | High Street cars, north |
| 2 Ohio State University.. | High Street or Neil Avenue, north |
| 3 State Fair Grounds | Fourth Street cars—At Fair time cars on all lines marked "Fair Grounds" |
| 4 Protestant Hospital | High Street cars, north |
| 5 Goodale Park..... | North Fourth, High Street or Neil Avenue cars, north |

N. B. If point desired to be reached is on a different line, ask for a transfer. When transfer is necessary the fare is five cents.



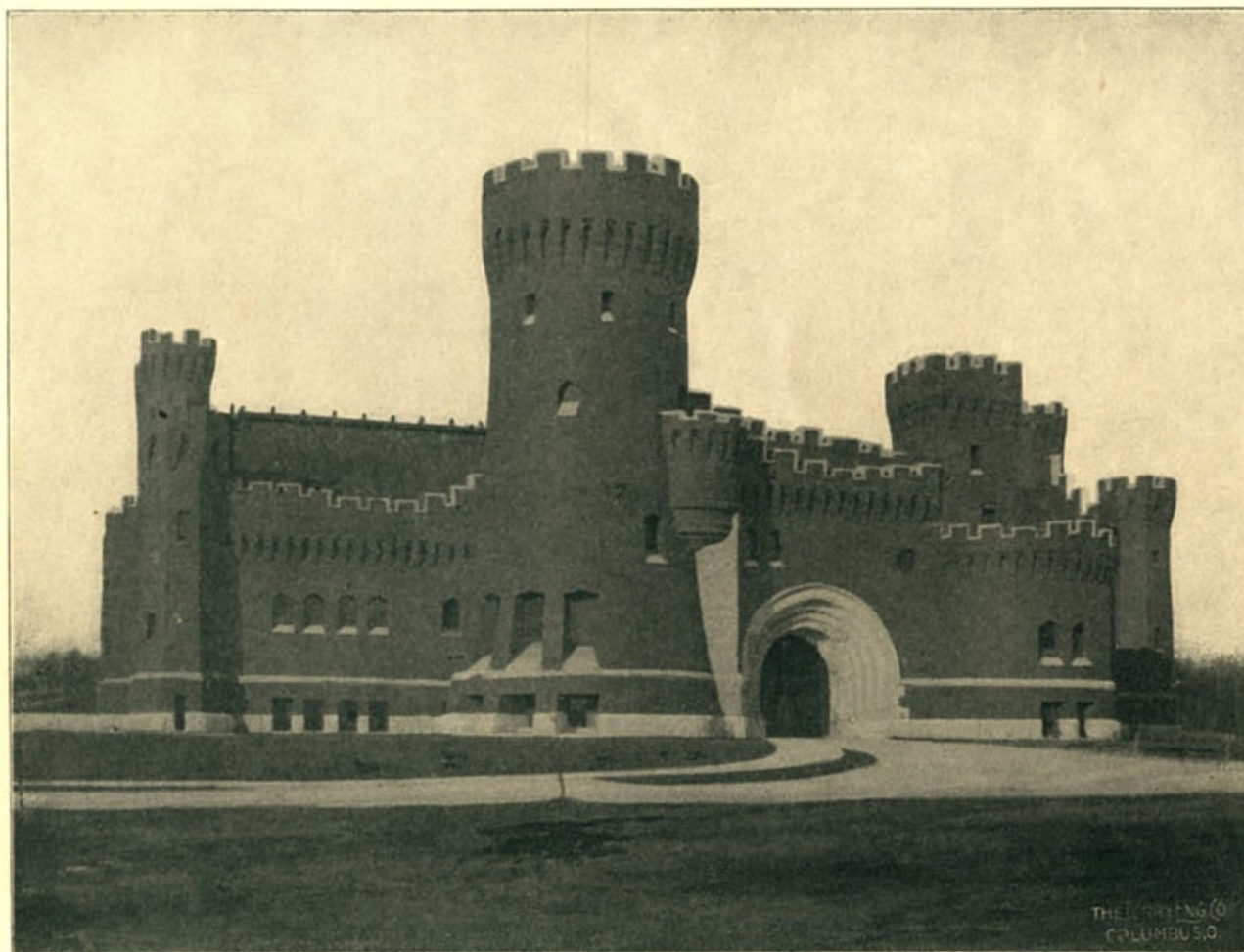
STATE CAPITOL BUILDING

As the State Capitol is the central figure of the City of Columbus, we have placed it first in the list of illustrations of State Institutions and other places of interest, and will use this as the diverging point for the directions and distances given. It is important to know that all cars of The Columbus Street Railway Company pass Capitol Square, and then branch out to all portions of the city and suburbs.



OHIO STATE UNIVERSITY

On account of its beautiful grounds and buildings, and the social and educational associations which cluster around it, the Ohio State University has never lost, but rather greatly increased in interest and value to the people of this great State. The grounds cover an area of over 100 acres, located about two and one-half miles north of Capitol Square, and two miles north of Union Station, and are accessible by three street car lines: North and South High Street, High and Schiller, and Main and Neil.



ARMORY AND GYMNASIUM HALL—O. S. U.

Within the past two years new buildings have been added, the most imposing of which are the Armory Hall and Gymnasium, and Townshend Hall. Almost every specimen of the forest is represented in the grand distribution of shade, and is a pleasing study in itself. The walks and driveways are excellent and well kept.



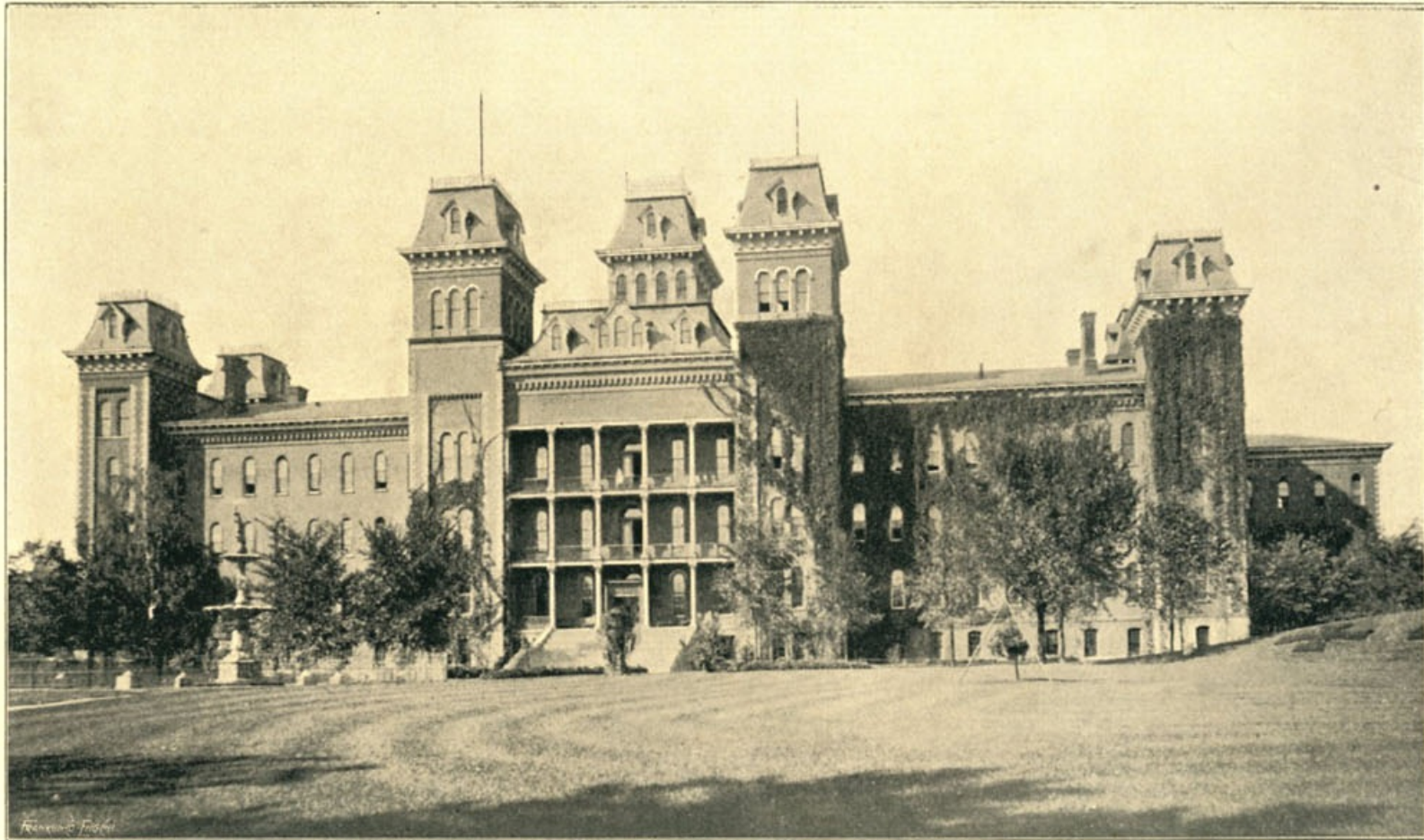
INSTITUTION FOR FEEBLE-MINDED

The buildings are located on a high, rolling tract of 187 acres, on the south side of West Broad Street, two and one-fourth miles west of Capitol Square. The main building, with its wings, is 567 feet in length, 78 feet deep, four stories high, and accommodates something over one thousand inmates. The building is a fine structure, surrounded by an abundance of natural shade. Take West Broad Street cars marked either Camp Chase or Central Avenue.



INSTITUTION FOR THE BLIND

The architectural design of this building, coupled with stone construction, presents a pleasing and attractive appearance. Is five stories high, 370 feet in length, 233 deep, contains 358 rooms and will accommodate 350 inmates. The grounds are beautifully shaded and embrace twelve acres. Distant from Capitol Square one mile. The cars of the Main Street line pass the south west entrance to the grounds.



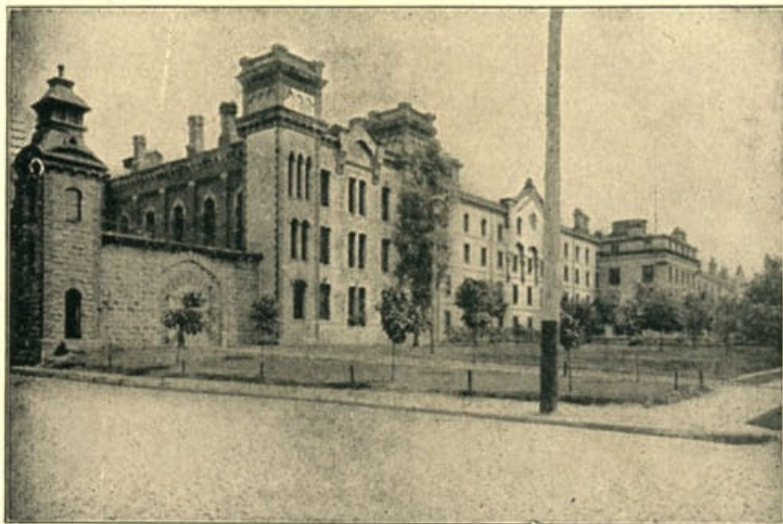
INSTITUTION FOR DEAF AND DUMB

The institution was erected at a cost of \$630,000. It is built of brick, and is elaborately trimmed with stone. The building, 270 feet in length, is surmounted by seven towers, the center one being 113 feet high, the two at its side 103 feet, and the four at the corners 97 feet. The center tower has been finished to the top, and from it visitors have a magnificent view of the city. There are ten acres of ground in the enclosure, and the building will accommodate 450 inmates. Is located between Oak and Town Streets, two-thirds of a mile east of Capitol Square, and is reached by State and Oak Street cars, east.



HOSPITAL FOR THE INSANE

The Hospital, costing about \$2,000,000.00, stands on an elevated plateau of three hundred acres about three miles west of Capitol Square, on the north side of Broad Street, facing almost directly east. Has a lineal frontage of about 1200 feet; a depth of about 800 feet; four stories in height; distance around the foundation walls one and one-quarter miles, and will accommodate about 900 patients. Cars of the West Broad Street line can be taken at various points on High Street between Chestnut and Broad Streets, and will take you directly to the entrance gate of the Hospital.



OHIO PENITENTIARY

The walls and main structure cover an area of 20 acres. The prison building proper is 630 feet in length, 45 feet deep, 3 stories high, and contains 1620 rooms, the capacity of which is 2177 prisoners. Is located on West Spring Street, three-fourths of a mile from Capitol Square. By leaving cars at corner of Spring and High Streets, visitors are in a short walking distance of the Penitentiary.

OHIO STATE FAIR

With the excellent grounds, buildings and location of the Ohio State Fair, the people of Ohio are now quite familiar. During Fair days special

lines of street cars are run from all parts of the city direct to the grounds. People arriving on trains can either take street cars at the Union Station direct for the Fair, or first ride into the city, then take cars on any of the lines marked "Fair Grounds."

The cars of the Columbus Street Railway are the only ones arriving at or leaving Union Station, and by these cars you should return from the Fair.

Distance from Capitol Square is three miles; from Union Station two and one-fourth miles.



GLIMPSE OF FAIR GROUNDS



STARLING MEDICAL COLLEGE

Beautiful in architecture, and one of the most imposing structures in Columbus. Is located on East State Street, one-fourth mile east of Capitol Square, and is reached by State and Oak Street cars, east.



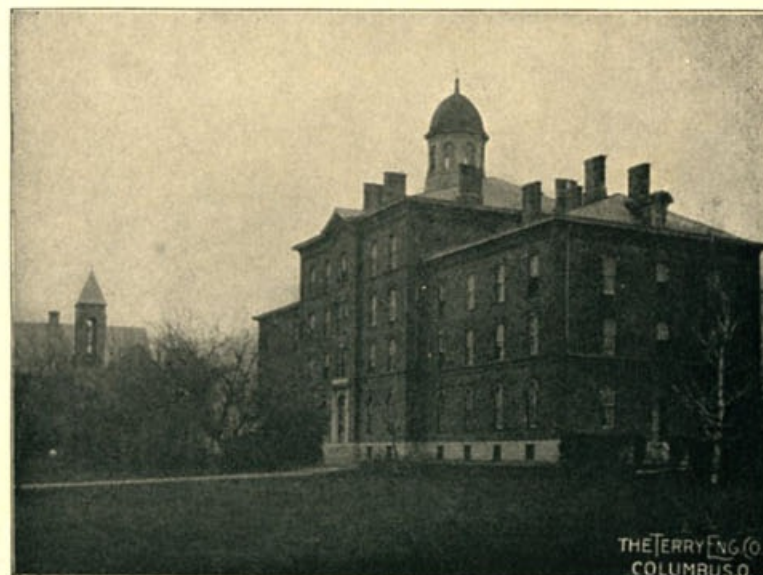
CAPITAL UNIVERSITY

A beautiful plat of 18 acres, with substantial buildings, having capacity for 250 students. Was established in 1850, and is under the control of the Lutheran denomination. Is located three and one-half miles east of Capitol Square on the Main Street car line.

OHIO
MEDICAL
UNIVERSITY

Is located just off of High Street, fronting on Park Street, one and one-fourth miles north of Capitol Square.

Take High St. or High and Schiller Street cars, north, or Neil Av. cars north.



THE TERRY ENG. CO.
COLUMBUS, O.



CITY PARK

A natural forest park, containing twenty-five acres, beautiful with lake, fountains, rustic bridges, buildings and walks. The grounds are well seated, and by the main entrance driveway is placed the splendid Schiller monument. The Park is located just off of High Street, one and one-quarter miles south of Capitol Square. Either High Street or High and Schiller Street cars take you within one square of the Park.



SCHILLER MONUMENT

Located at entrance to City Park.



FOUNTAIN—CITY PARK



VIEW ON HIGH STREET



GOODALE PARK

With the exception of the mile speeding track the same general features apply to Goodale Park as noted under Franklin Park. The scope of fifty acres affords excellent opportunity for fresh air, driving, walking, or rest and quiet. The Park is accessible by four street car lines: North and South High Street, High and Schiller, Main and Neil, and Fourth and Livingston. About one mile from Capitol Square, north.



FRANKLIN PARK

This beautiful tract of rolling land, well shaded by natural forest trees, and containing one hundred acres, is situated two miles east of Capitol Square. The fine natural scenery has been supplemented by a lake, numerous elegant walks, fountains, buildings, drives and an excellent half mile speeding track. The Park is reached directly by either Long Street or Oak Street cars, east.



BOARD OF EDUCATION
AND SCHOOL LIBRARY

Is located on Town Street one square east of High Street.

U. S. BARRACKS

Visitors from other parts of the State should visit these delightful grounds. Natural forest shade, and splendid drives and walks. Contains sixty-eight acres, forty-eight buildings, and will accommodate six hundred soldiers. Is located one and one-fourth miles from Capitol Square, northeast, and is reached by cars of the Leonard Avenue line passing the main entrance.



FRANKLIN COUNTY COURT HOUSE

An elegant, modern building, rich in architectural design, of which any county might be proud. Is located on High Street, one-half mile south of Capitol Square, and is reached by High Street, High and Schiller, Long, and Fourth and Livingston car lines, south.



HIGH STREET, SOUTH FROM BROAD

Across High Street for a distance of one mile ornamental steel arches are suspended at intervals of one-half square, each having fifty incandescent electric lamps. The illumination on buildings and street at night presents one of the most pleasing effects to be seen in any progressive city and is the admiration of everyone visiting Columbus. A street car ride under these lights is delightful. The view obtained of High Street when coming out of the Union Station cannot fail to attract the favorable attention of every stranger to the city.



RIVER ROAD—SCIOTO RIVER

The finest for picturesque scenery of any stream in the State. The river road is famous as a delightful course for driving, and the rural homes are of more than usual interest.



COLUMBUS BOARD OF TRADE

Board of Trade is located on Broad Street, one-half square east of High Street, and directly opposite the north entrance to the State House.



CUSTOMS HOUSE AND POSTOFFICE

A substantial and commanding stone structure, located on East State Street, opposite the southeast corner of Capitol Square, and is reached by State and Oak Street cars, east.



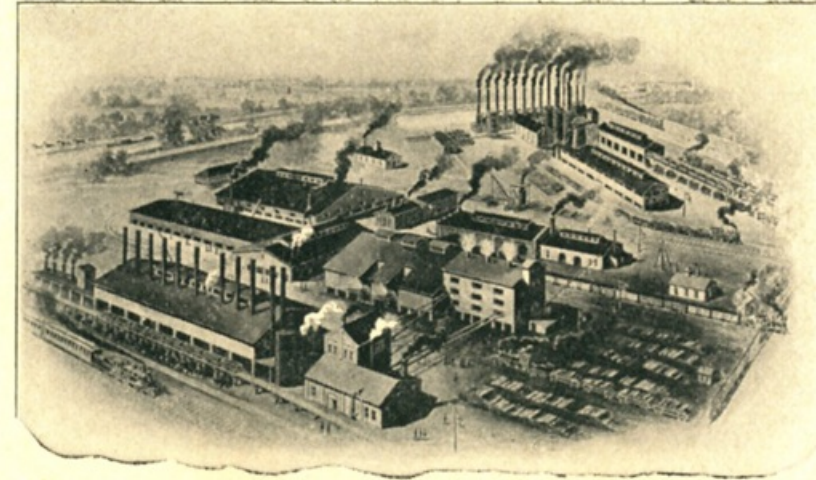
COLUMBUS DRIVING PARK

Is located on Livingston Avenue, two and one-half miles southeast of Capitol Square, embraces eighty-five acres, the total outlay for grounds and building being \$150,000.00, the one-mile track alone costing \$85,000.00. This track is considered by experts to be the fastest in the United States. At the August meeting in 1897 the fastest time on record for pacing horses was made by Joe Patchen in 2:01½.

The grand stand has a seating capacity of 4400. Cars of both Main Street and Livingston Avenue lines run into the grounds, delivering passengers at the grand stand.

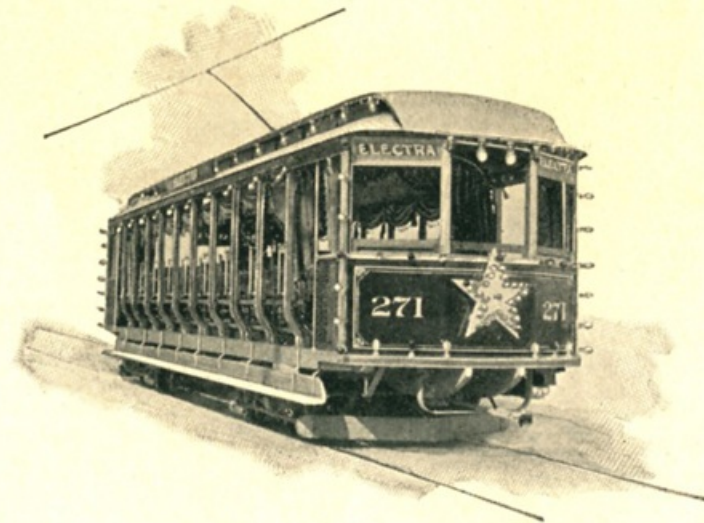
ILLUMINATED CAR "ELECTRA"

Specially fitted up for evening trolley parties. Can be chartered at reasonable rates by the hour or evening.



STEEL PLANT

One of the best equipped steel plants in the country; includes two blast furnaces, and employs eight hundred men. It is located on South High Street, two and one-fourth miles south of Capitol Square. Take High Street cars, south.



It is not exaggerating to say that Columbus has come into possession of as handsome and complete a railway station as can be found in any city of like population in the United States. Entrances for both vehicles and pedestrians are located on the High Street Viaduct over the network of railroad tracks. Cars of the Columbus Street Railway Company pass directly in front of these entrances for all parts of the city. Distance, one-half mile from Capitol Square.



MAIN ENTRANCE, UNION STATION



STREET RAILWAY WAITING ROOM

For the convenience of its patrons and the traveling public, the Street Railway Company has provided a convenient and commodious waiting room at the entrance of the Union Station, from which all cars of the company arriving or leaving can be plainly seen. A representative of the Street Railway is stationed at the waiting room to give all necessary information as to arrival and departure of street cars, and directions to take. The cars of the Columbus Street Railway are the only ones reaching Union Station,



BROAD STREET- LOOKING EAST



STREET SCENE BY ELECTRIC LIGHT



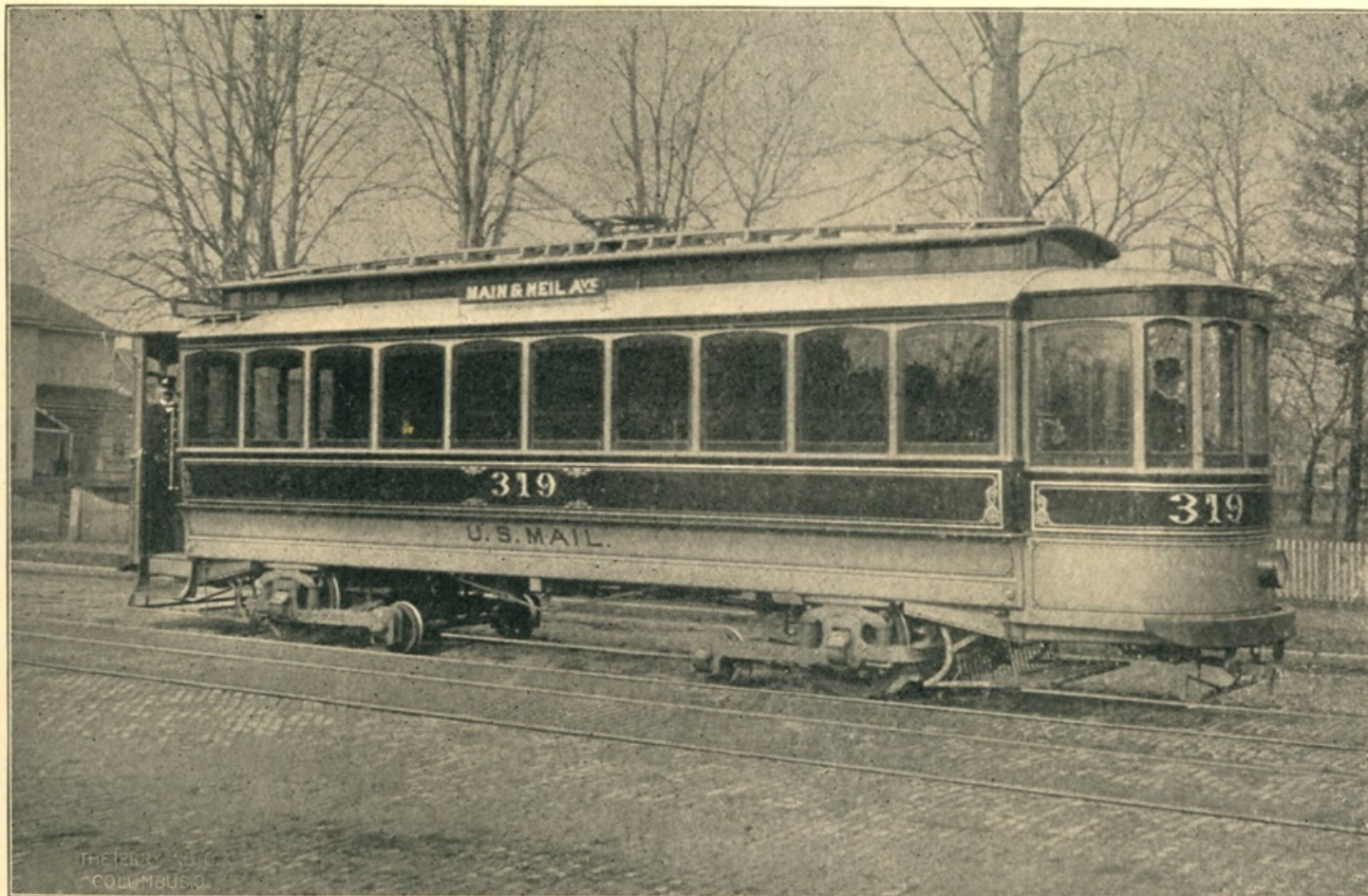
VIEW ON SCIOTO RIVER



BIRDSEYE VIEW OF HIGH STREET

In so limited space it would be impossible to give full illustrations and descriptive matter of all the interesting points of a city of 140,000 people. By carefully consulting the Map, and taking Capitol Square as the central point of the city where all lines pass, strangers will have no difficulty in reaching any desired locality.

(See Map on page 4)



The car service cannot be excelled by any street railway in a city of like population. Transfers to all parts of the city. Cars may be chartered by parties at reasonable rates, either by the hour or trip.

Olentangy Park



It is the purpose of the following pages to present views and facts relative to the attractiveness of one of the most available and desireable park resorts in the State, located three and one-half miles from Capitol Square. This beautiful park was opened to the public by The Columbus Street Railway Company on June 12, 1896, and is situated on both banks of the Olentangy River, in close proximity to the north corporation line of the City of Columbus. Nature has here been lavish in its distribution of picturesque scenery, to which has been added

substantial and commodious buildings, and other accessories to a first-class park. One might travel far indeed before finding another such enchanting place.



GOTHIC GATEWAY

The entrance to the park is attractive with its antique ornamentation and Norman windows. This castellated gate is one hundred feet west of High Street, and at the extreme northern limit of the city.



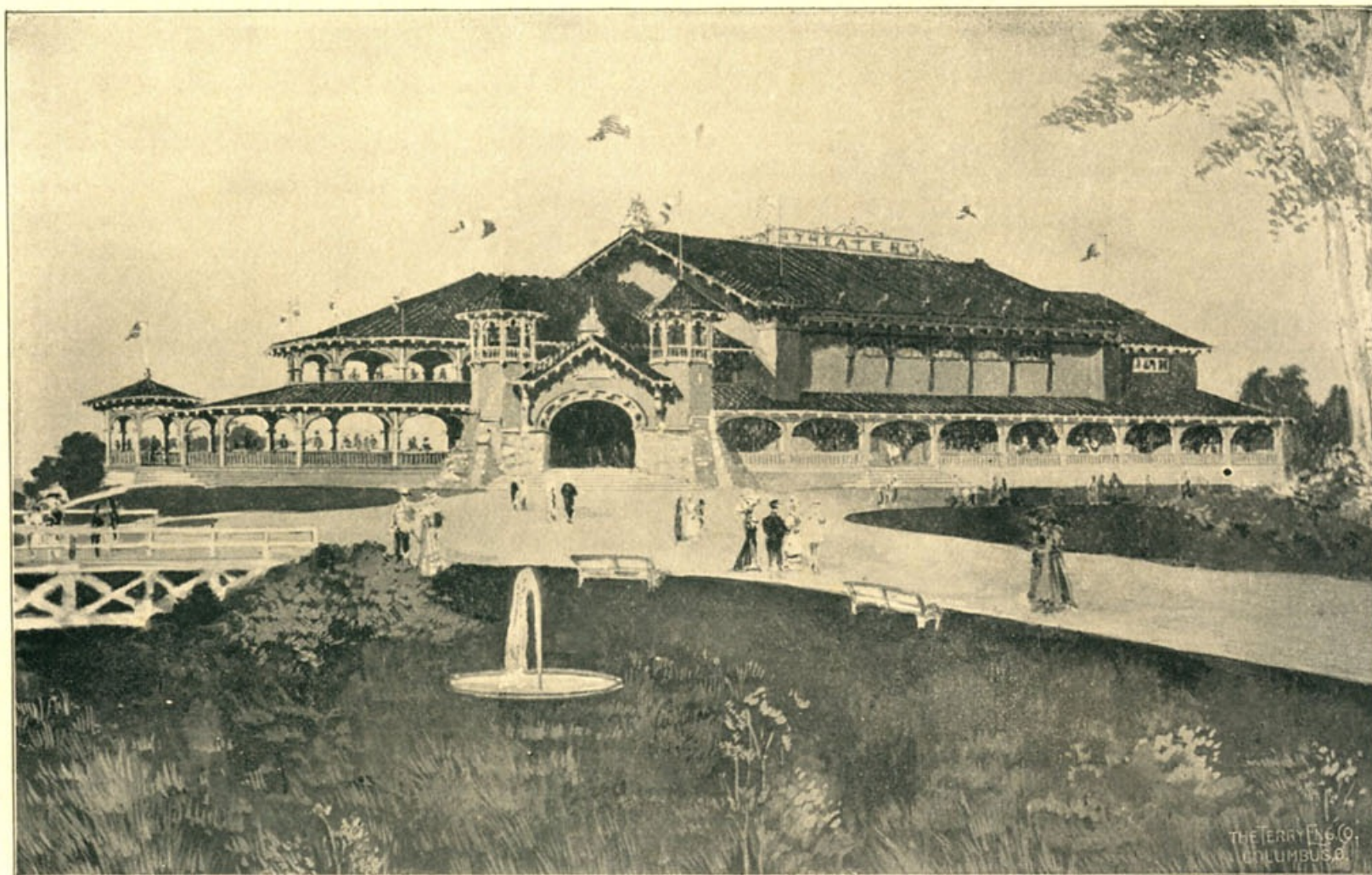
TERMINAL STATION

After having passed the gateway, the handsome station, with its many gates, attracts attention. The provision made for readily handling large crowds is ample.



BRIDGE AND GLEN

Leaving the terminal station, the visitor observes first, the great bridge. The view from this point is one of rare beauty, and the deep ravine a most charming place for picnic parties.



OLENTANGY PARK THEATRE

OLENTANGY PARK THEATRE COMPANY, OWNERS.

GEORGE L. CHENNEL, MANAGER.

This new and magnificent structure, occupying a prominent position to the left after passing over the main bridge, is conceded to be the finest summer amusement palace in this country. It covers a space of 80 by 150 feet and is surrounded on all sides by spacious verandas and prome-

nades. Has a seating capacity of 2248 people, enumerated as follows: main floor 1200, balcony 600, and gallery 400; there are eight boxes each seating six people.

The entire auditorium is seated with the latest and most improved folding opera chairs and every seat is sold by a reserved numbered coupon ticket. The stage is 40 by 60 feet and is equipped with all the most modern appliances and a full line of scenery.

All the leading vaudeville artists as well as comic opera and minstrel stars will appear upon this stage, an entire change of program being given each week. Among some of the artists who will appear this season are The Celebrated Tragedian, Robert Downing, with his own company; Will H. Fox, the American Paderewsky; The Celebrated Faust Family of Acrobats; Diana, The Marvelous Mirror Dancer; Geo. H. Fielding, European Juggler; The Goldsmith Sisters, European Artists; Whitney Brothers, Musical Wonders; Zeno, Karl & Zeno, Contortionists; Inez Mecusker, Operatic Vocalist; The Renowned Noss Family, Musical Experts and Vocalists; Aggie and Her Trained Lions; Ollie Young, Club Swinger; Prof. Howard and His Educated Ponies; Mr. and Mrs. Robyns in their Dramatic Sketch, "The Council for the Defense;" The Celebrated Barlow Bros. Minstrels, 32 in number; The 8 Onris, Intrepid Acrobats; Gruet, Beers & Gruet, Comedy Acrobats; Dixon, Bowers & Dixon, Comedians and Dancers, and many other prominent artists.

NEDDERMEYER'S FAMOUS BAND AND ORCHESTRA will be in attendance at every performance. Band Concert daily, afternoon and evening, before each performance. All the attaches are uniformed and all of the entertainments are first-class in every respect, a special effort being made by the management to cater to the ladies and children.

Any patron can attend this amusement palace, resting assured that neither by word or action will anything be allowed by the management that the most fastidious could take exceptions to.

Only twenty-five minutes ride from the heart of the city.



BOAT HOUSE

Nestling down at the foot of the glen below the bridge is the boat house, where a commanding view is had of the boats and the river. The river at night is brilliantly illuminated by electric lights and the effect on stream and boats is enchanting. Connected with the boat house are four first-class bowling alleys.



DOCK AND BOATS

The facilities, either by launch or row boat, cannot be excelled. A water range of about two miles opens up an enchanting panorama of bluffs, ravines and wooded banks.



THE WILLOWS

The immense bending willows, whose shadows never lift from the deep ravine, are beautiful, and are never more charming than at night when the electric lights turn the pale green leaves to silver. The beauty and size of these ancient trees come little short of the famous "Salem Willows."



RIVER WALK-Upper View

A delightful stroll may be taken on the west bank of the river, reached by crossing on the large pontoon bridge. A fine view is here had of the bluffs, buildings and trees skirting the east bank or main part of the park.



PAVILION AND BOWLING ALLEY

Aside from its large seating capacity, the pavilion contains three of the finest equipped bowling alleys in the state. Is located on a high point of ground and in the midst of bountiful shade.



VIEW FROM BLUFFS

The number of picturesque scenes opening to the view on the Olentangy River running through the park is marvelous. The great variety of trees and shrubs is a charm to lovers of nature.



MIDDLE GLEN

In looking upon scenes like this the eye never tires, and the children never grow weary in romping up and down the inviting bluffs or of sitting in the shade watching the boats flit by.



NORTH GLEN

Every young man and maiden and every child may find exquisite enjoyment in strolling midst these bluffs and glens. Each bluff is as a wall partition separating one place of beauty from another.



OLENTANGY SPRING

A stroll to the north on the east bank of the river brings one to Olentangy Spring, where a quaff of the most sparkling water in the State may be had.



SYCAMORE QUARTETTE

Just beyond the spring stands this famous quartette of forest companions with high trunks and far-reaching foliage. This is but one of the many scenes of beauty along the Olentangy.



RIVER VIEW

What could be more enchanting than a ride upon this gracefully wooded and winding stream? At this point one gets away from the view and noise of the city and takes in the invigorating air of the country.



DOWN THE RIVER

Returning from a ride up the river the view on approaching the park proper is one of the most artistic scenes imaginable.



WILLOW BEND

The bend far up the river is famous for its magnificent willows and sycamores, of smooth current and deep shadows.



THE OLD MILL

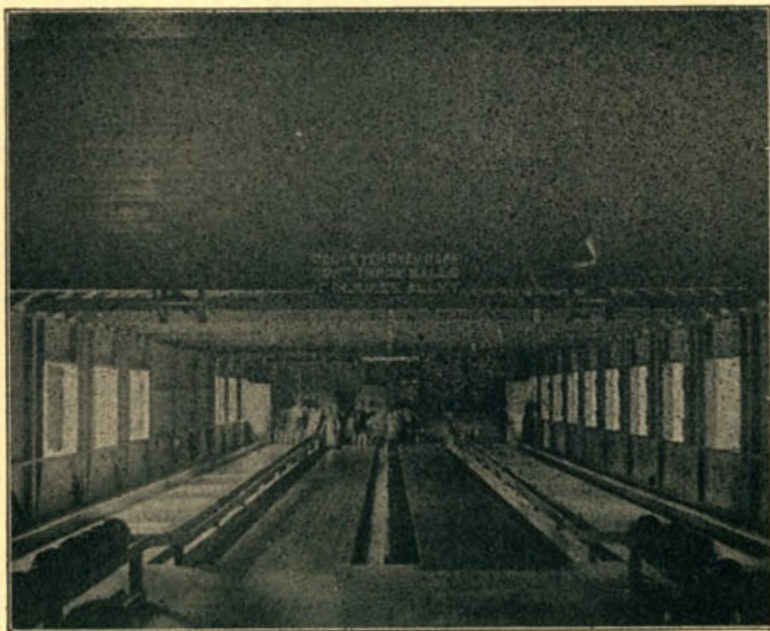
The Old Mill stands at the southern terminus of the park. A selection from the song of "Jerry the Miller" is appropriate to this quaint place—

"Beneath the hill you may see the mill
Of wasting wood and crumbling stone."



VIEW FROM BOAT HOUSE

The camera has here caught one of those intensely quiet and restful scenes of a summer day upon the water, and always in sight from the boat house.



BOWLING ALLEYS



OLENTANGY PARK ATTRACTIONS

The finest theatre and performances to be found in the State. Excellent Boating by Launch or Row Boat; Four First-class Bowling Alleys; Electric Merry-Go-Round; Dancing Pavilion; Splendid Music; Electric Lights; Choice Refreshments; Plenty of Shelter; Fresh Air; Double Swings in Abundance; Clean and Substantial Seats; Deep, Shady Glens; Fine River Walks; Steep, Wooded Bluffs; Well Policed and all other requisites necessary for quiet and enjoyment. No Liquors. Just the place for SOCIETY OR PICNIC PARTIES, day or evening.



A BOAT LANDING



OLENTANGY RIVER

CAR SERVICE

The Columbus Street Railway Company offers to its patrons of the park, first-class, large, open car equipment, run at frequent intervals, and prompt and courteous employes. Fare paid on car admits to the grounds. All cars running to the park are marked "Olentangy."

TO PARTIES

Day Schools, Sunday Schools, Civic Orders, Clubs and Associations of every kind in other towns and cities can find no better place for a day's outing than Olentangy Park. If you want the combined pleasure of a steam railway ride, a street railway ride, and then excellent boating on the river, bowling and other amusements of a well conducted, first-class park, come to Columbus and go to Olentangy. Write to the Columbus Street Railway Company a few days in advance of the time when you wish to come, stating how many you will have in your party and the day. We always like to know when our friends are coming.

TO VISITORS

When in Columbus be sure and embrace the opportunity of riding about and becoming acquainted with the beautiful Capital City. In no other way can this be accomplished at so slight a cost. TAKE THE YELLOW CARS AND KEEP THIS BOOK FOR REFERENCE.

